



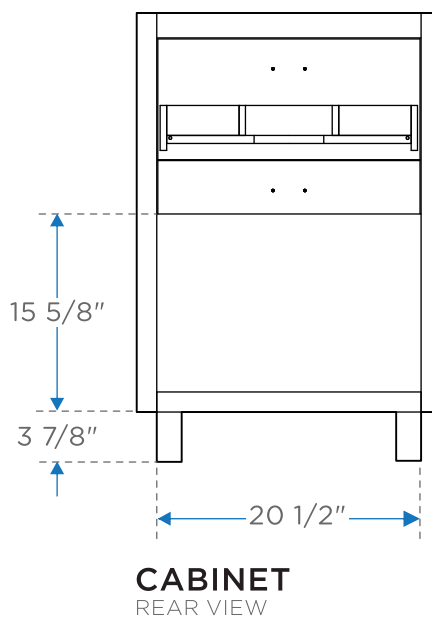
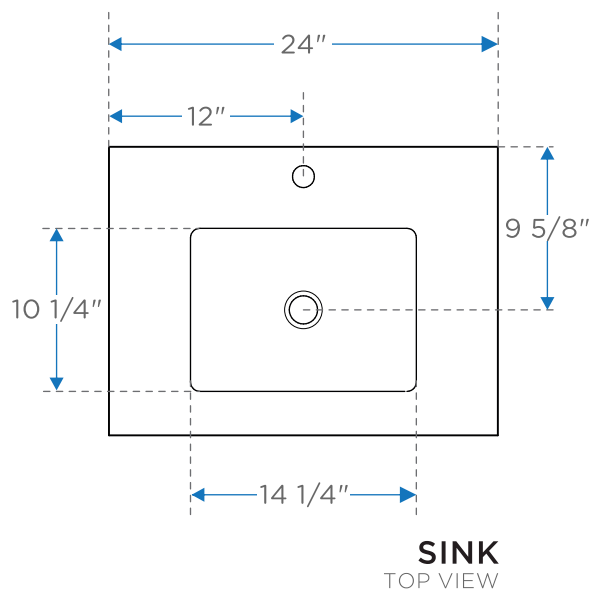
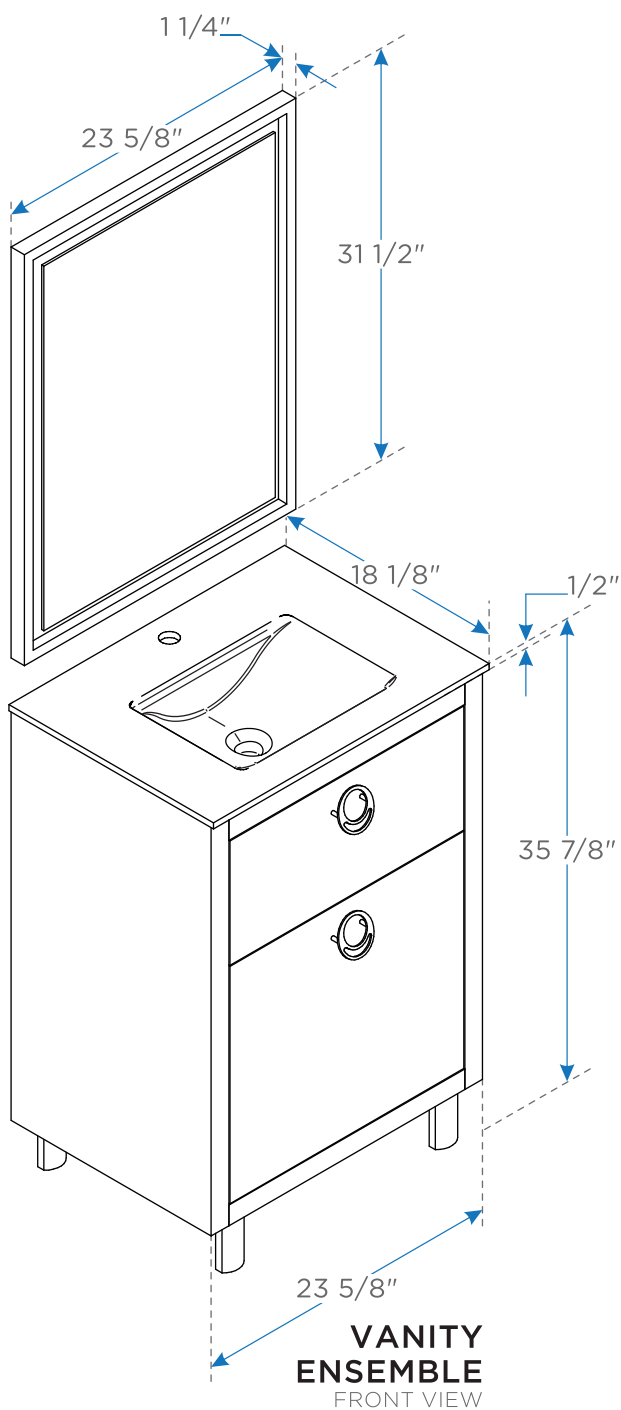
FPVN7824

Due

INSTALLATION GUIDE



Note: Please read assembly instructions carefully before the installation.

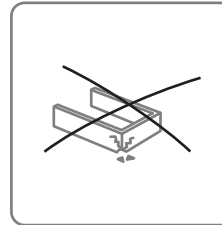
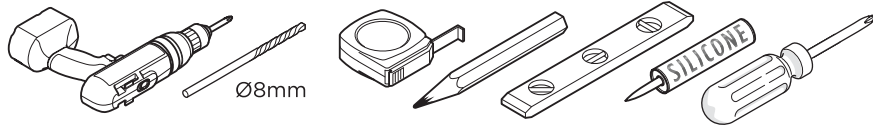


ALL DIMENSIONS & SPECIFICATIONS ARE APPROXIMATE AND SUBJECT TO CHANGE WITHOUT NOTICE.



INSTALLATION INSTRUCTIONS:

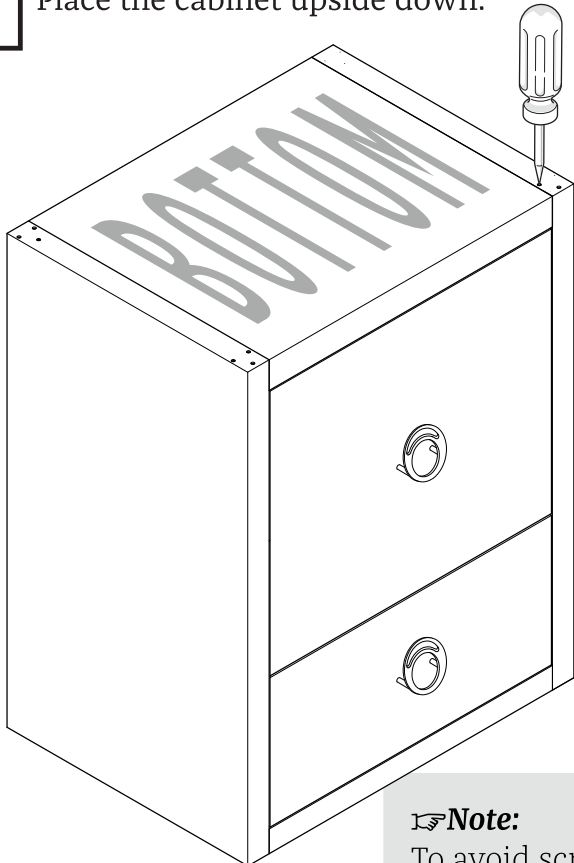
TOOLS NEEDED FOR INSTALLATION



Note:
Manufacturer is not responsible for damages caused by improper installation.

LEG INSTALLATION :

- 1.** Place the cabinet upside down.

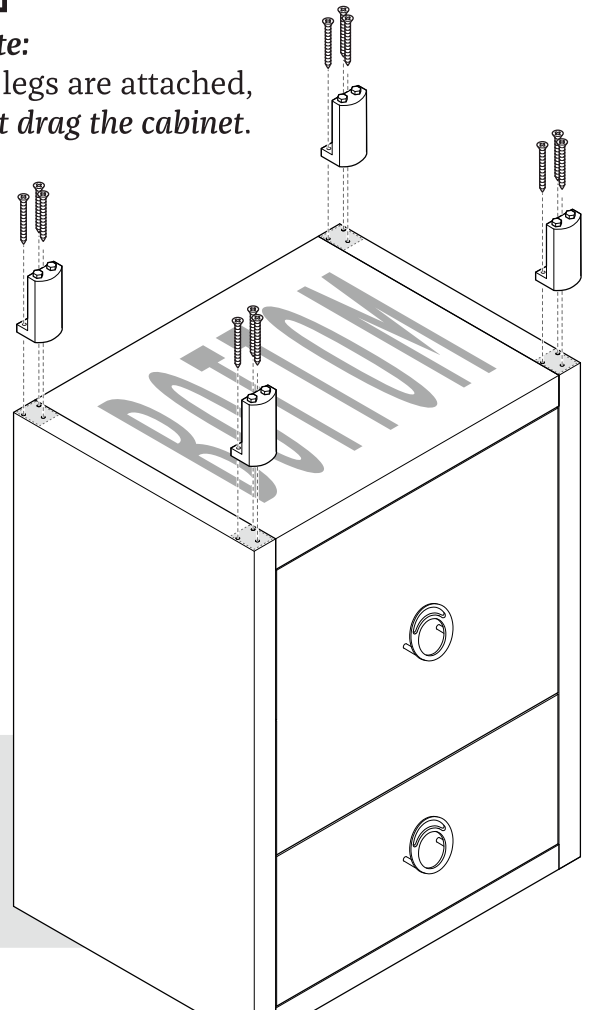


Note:
In case the holes are not marked, you can mark them using a sharp tool.

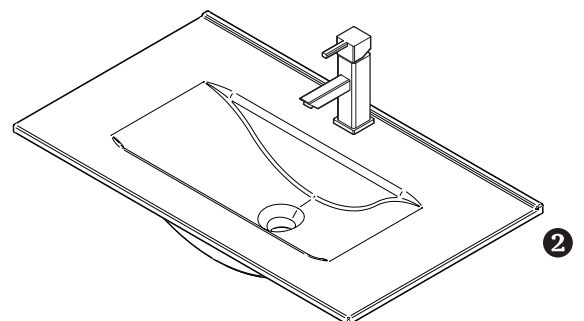
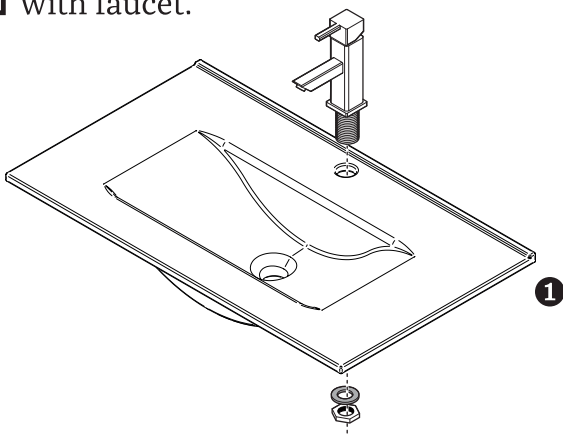
Note:
To avoid scratches place cabinet on a smooth soft surface.

- 2.** Attach legs to the cabinet using screws.

Note:
Once legs are attached, do not drag the cabinet.



- 3.** Attach the faucet to the sink and secure it with the rubber washer and the brass nut provided with faucet.



FPVN7824

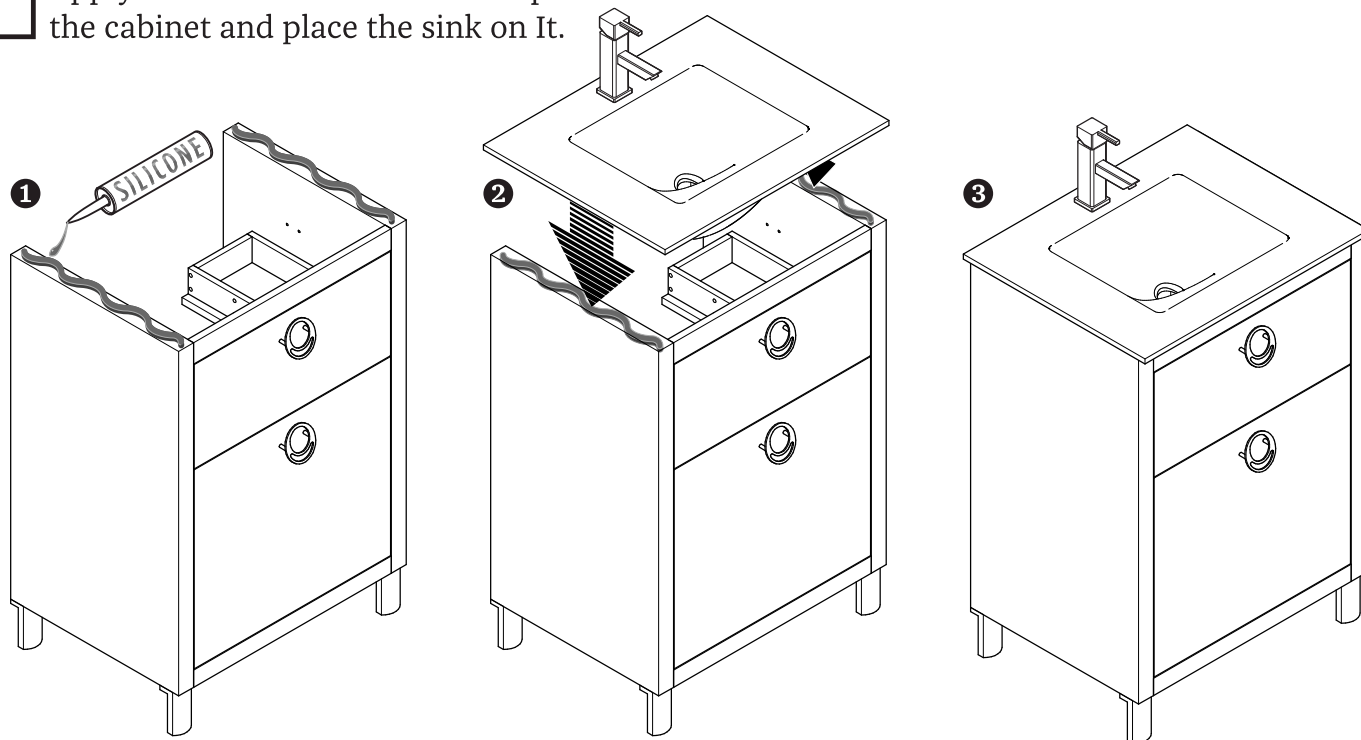
DUE

INSTALLATION GUIDE

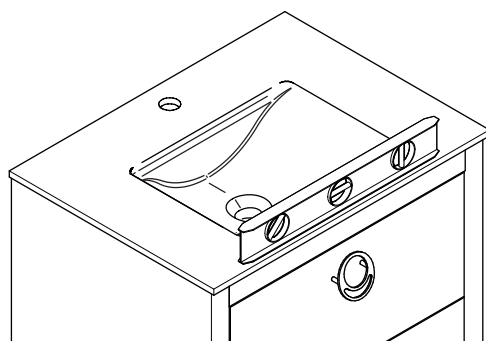
PAGE 2

INSTALLATION INSTRUCTIONS:

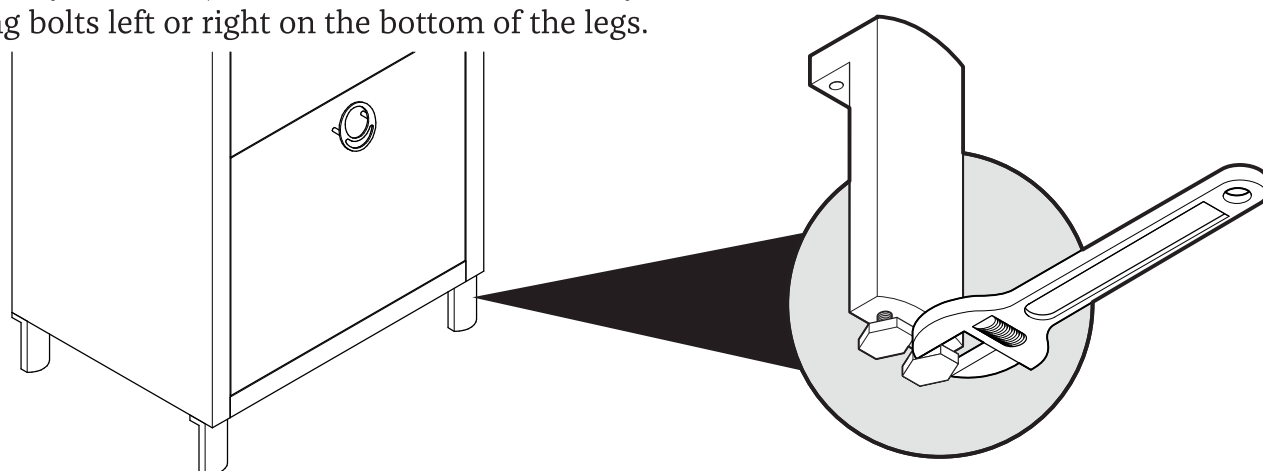
- 4.** Apply a bead of silicone on the top of the cabinet and place the sink on It.



- 5.** Place the cabinet on it's legs and place the level on the top to determine if leveled.



- 6.** If needed you can adjust the level of the cabinet by rotating bolts left or right on the bottom of the legs.



FPVN7824

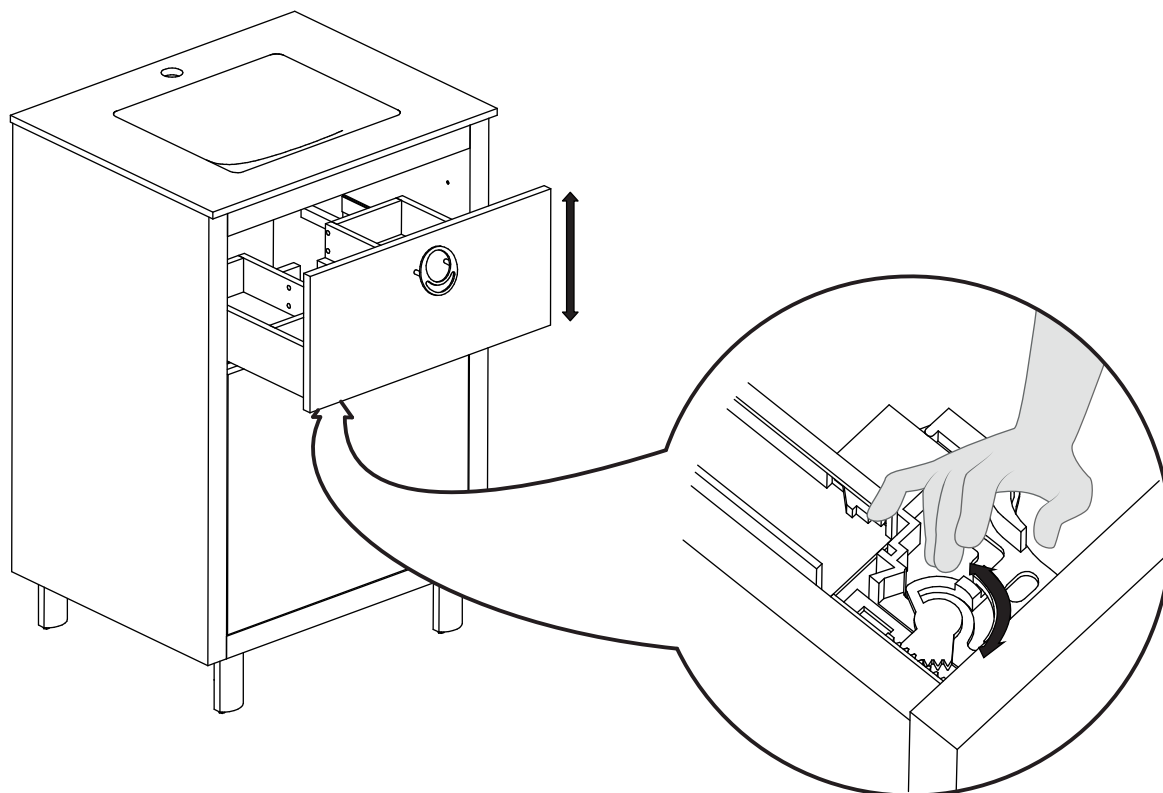
DUE

INSTALLATION GUIDE

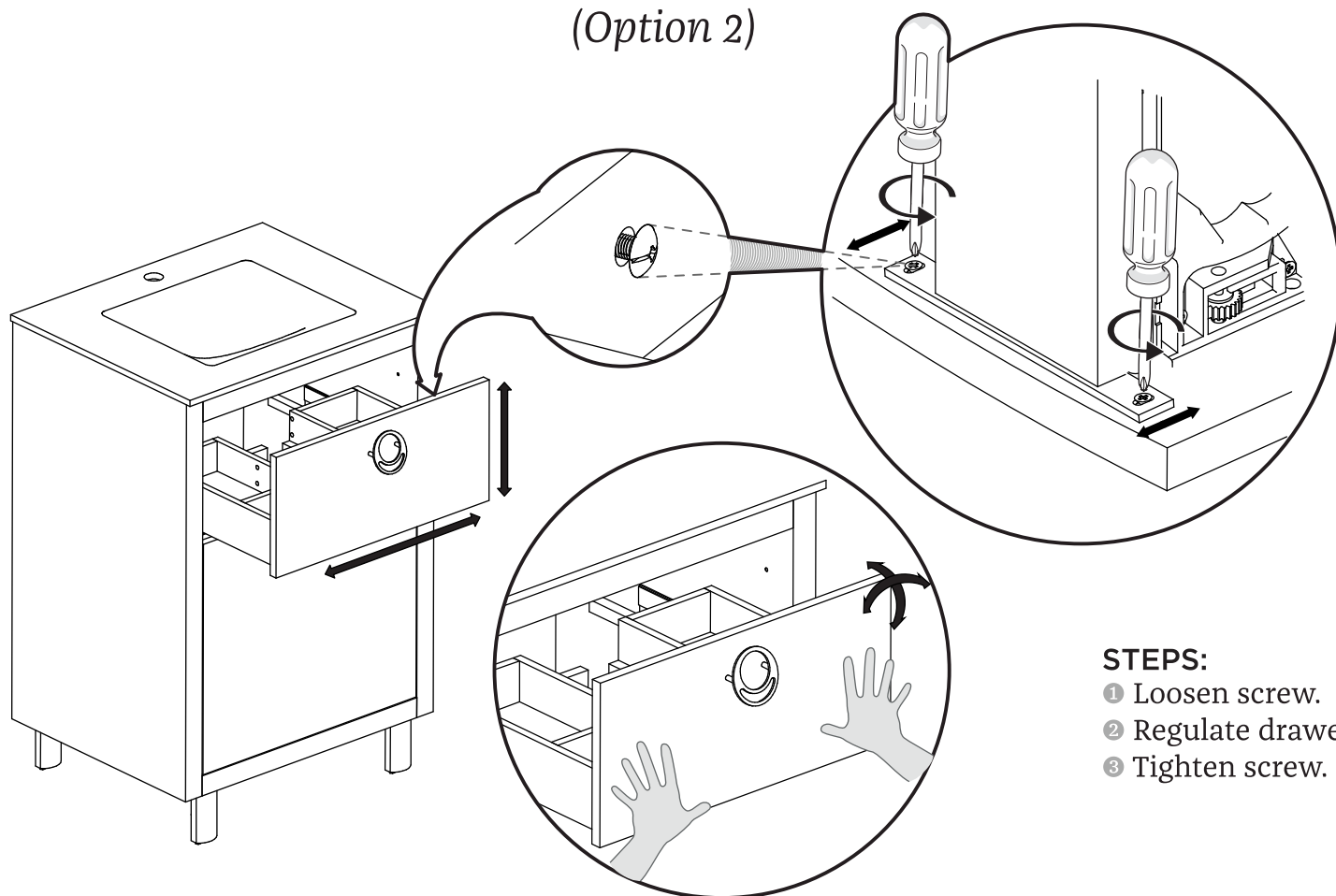
PAGE 3

FRONT DRAWER ADJUSTMENT:

VERTICAL ADJUSTMENT



VERTICAL & HORIZONTAL ADJUSTMENT (Option 2)



STEPS:

- ① Loosen screw.
- ② Regulate drawer.
- ③ Tighten screw.



FPVN7824

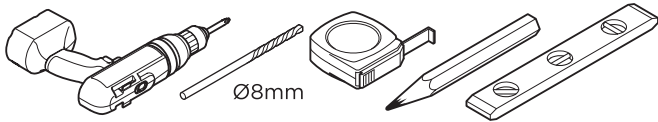
DUE

INSTALLATION GUIDE

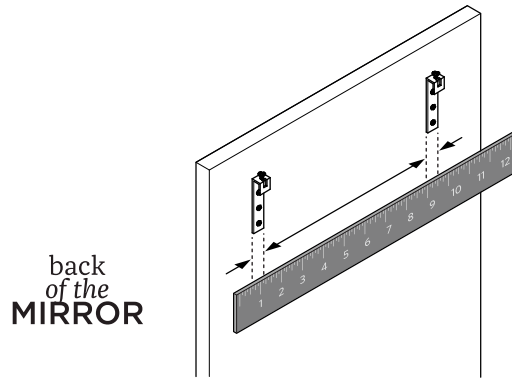
PAGE 4

MIRROR INSTALLATION INSTRUCTIONS:

TOOLS NEEDED FOR INSTALLATION

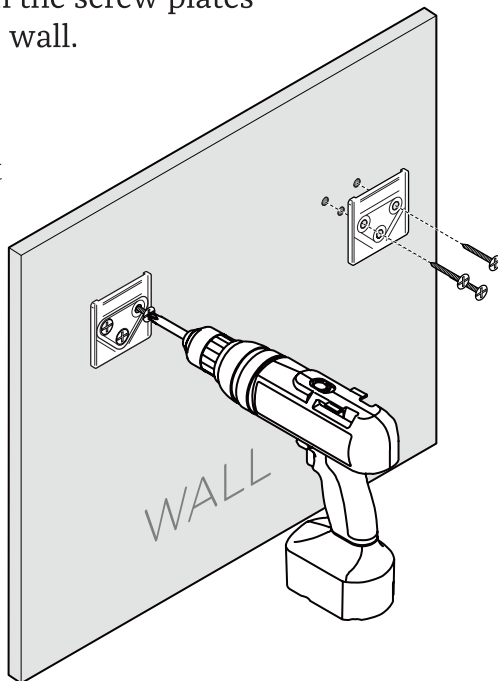


1. Measure distance between the brackets on the back of the mirror.

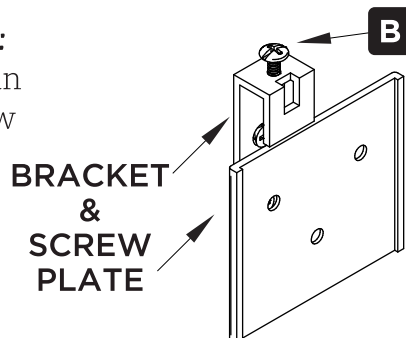


3. Attach the screw plates to the wall.

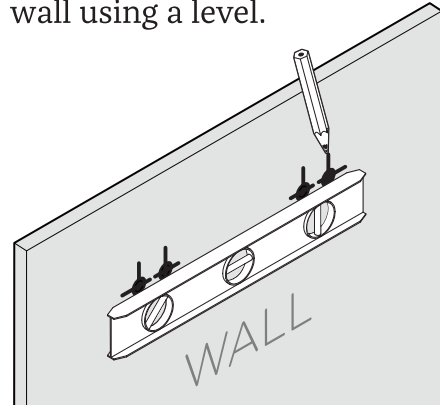
Note:
Use anchors if stud is not available.



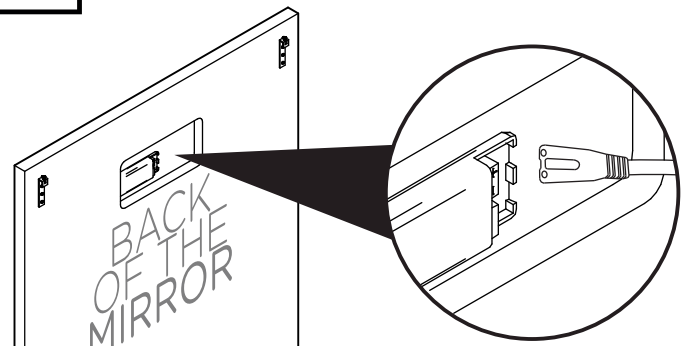
Note:
If the mirror is not leveled:
Fine-tune adjustments can be made by rotating screw (B) on bracket.



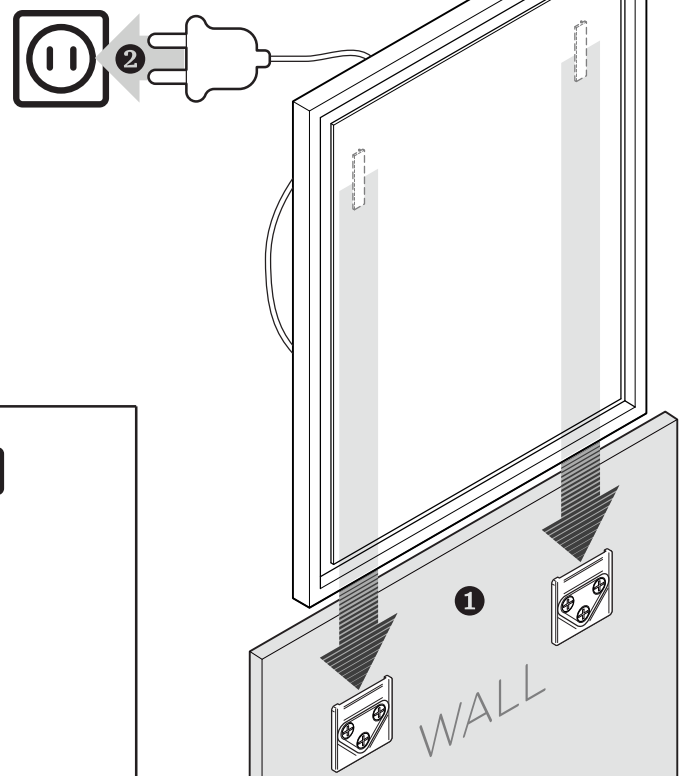
2. Mark a measured distance on the wall using a level.



4. Connect electrical wire to the transformer.



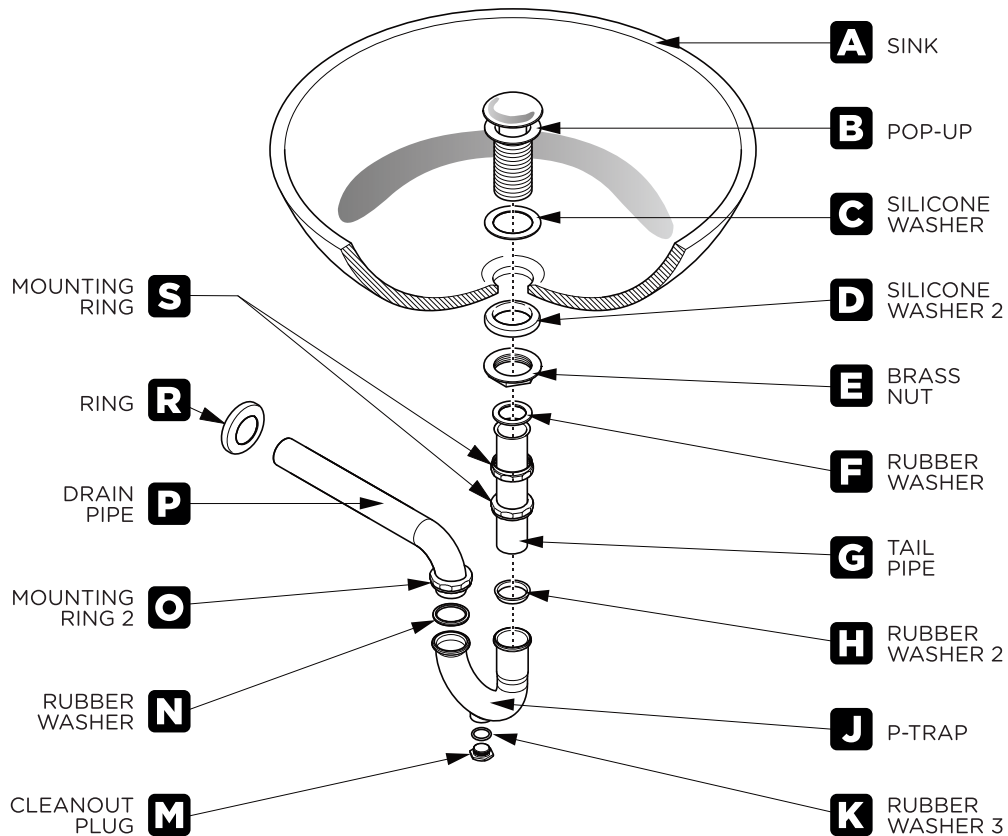
5. Slide mirror into place and connect power plug to outlet.



POP-UP & P-TRAP

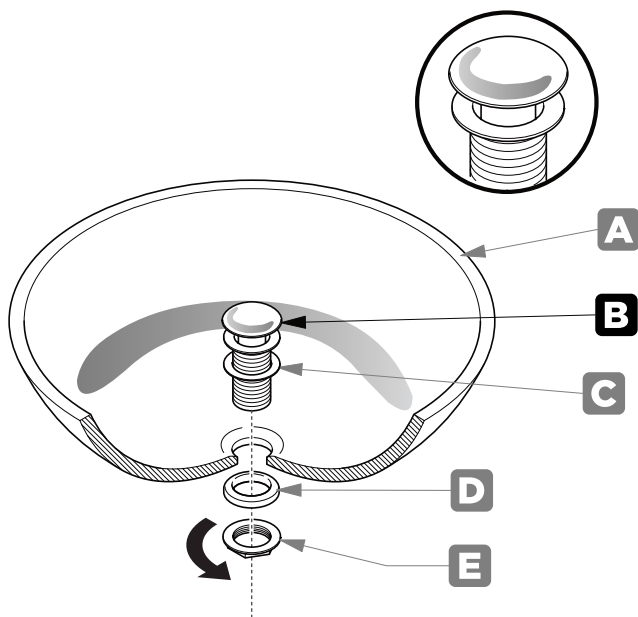
INSTALLATION INSTRUCTIONS:

Your item may appear slightly different from the illustration.



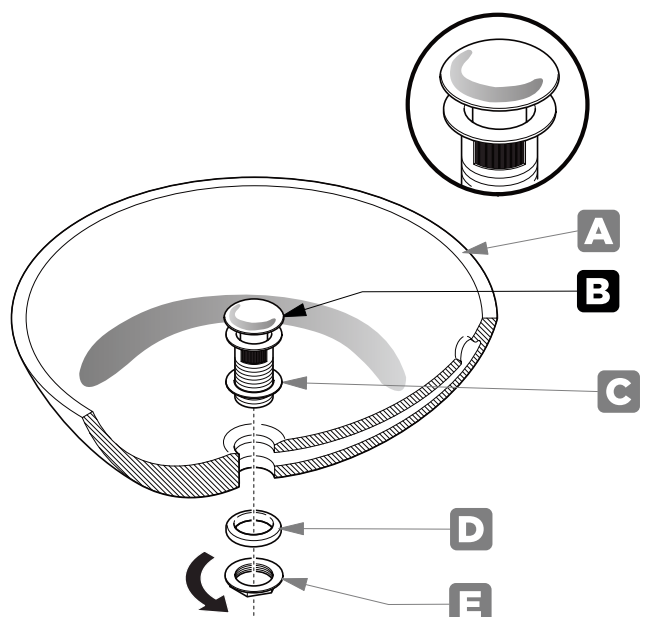
POP-UP INSTALLATION

**FOR SINKS
WITHOUT OVERFLOW**



OR

**FOR SINKS
WITH OVERFLOW**



FPVN7824

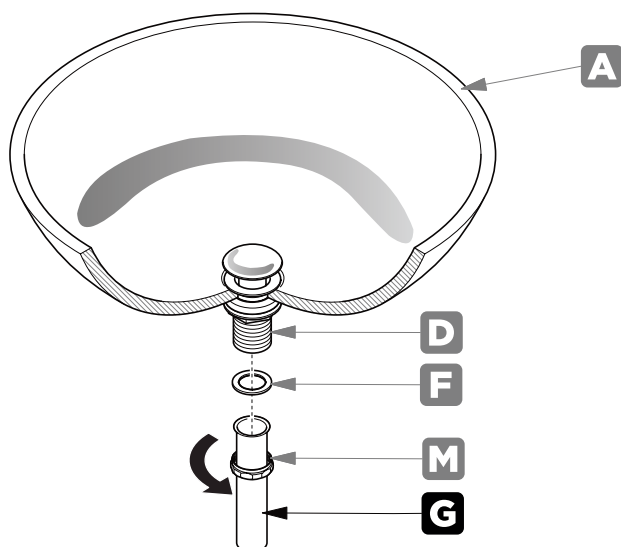
DUE

INSTALLATION GUIDE

PAGE 6

P-TRAP INSTALLATION

1. Install tail pipe (G).



2. Install P-trap (J).

