

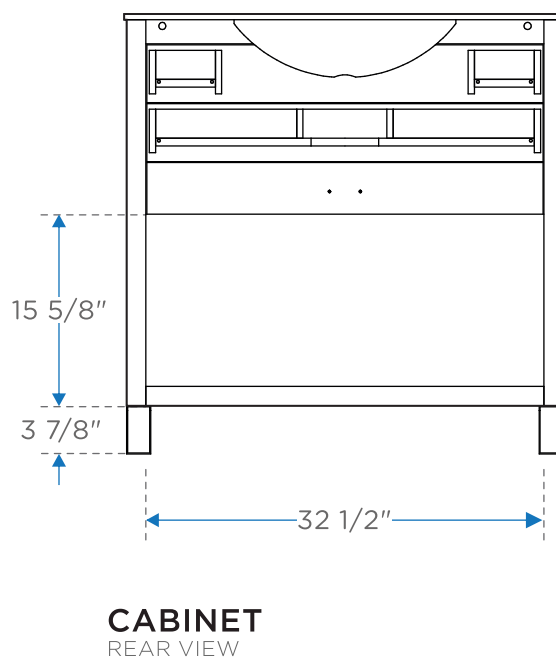
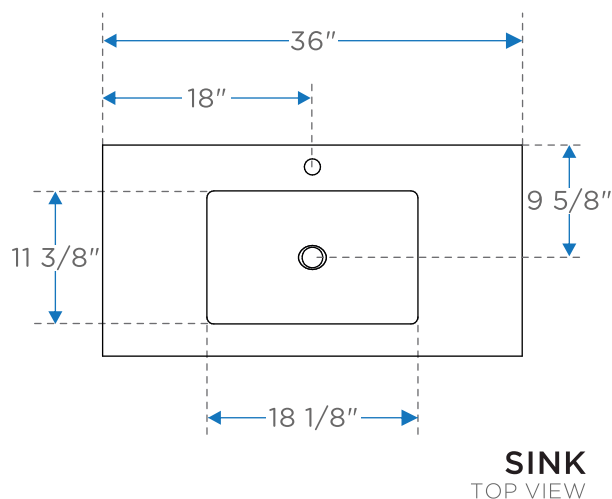
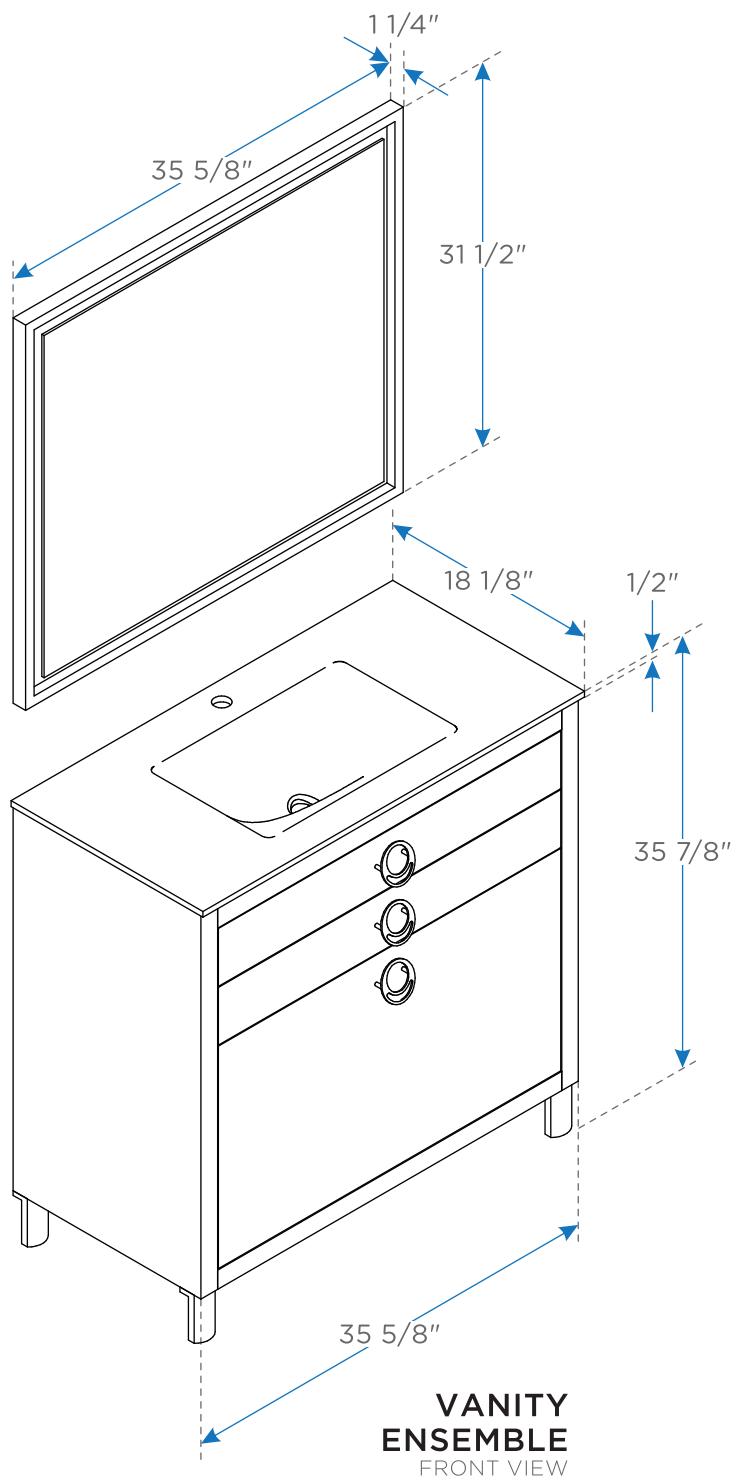
FPVN7836

Due

INSTALLATION GUIDE



Note: Please read assembly instructions carefully before the installation.

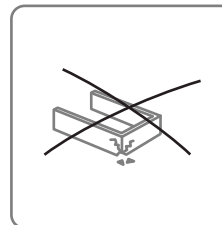
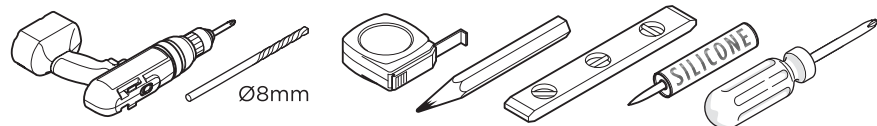


ALL DIMENSIONS & SPECIFICATIONS ARE APPROXIMATE AND SUBJECT TO CHANGE WITHOUT NOTICE.



INSTALLATION INSTRUCTIONS:

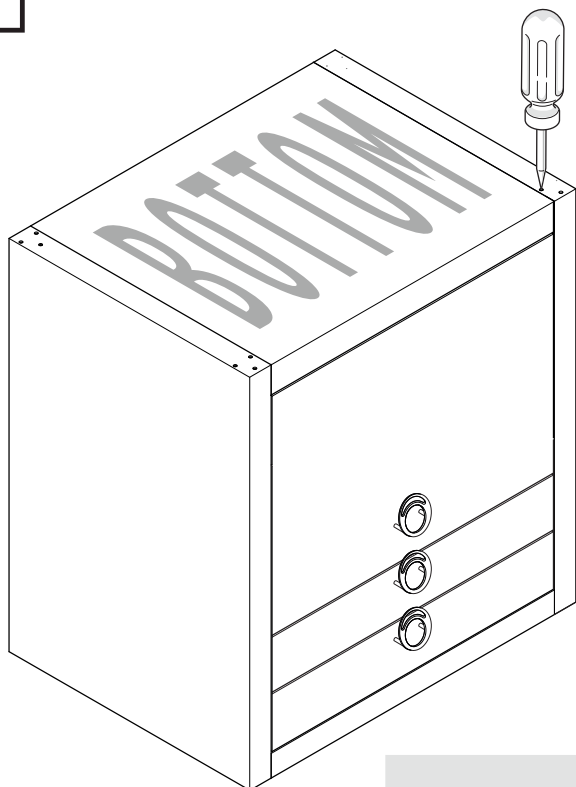
TOOLS NEEDED FOR INSTALLATION



Note:
Manufacturer is not responsible for damages caused by improper installation.

LEG INSTALLATION :

1. Place the cabinet upside down.

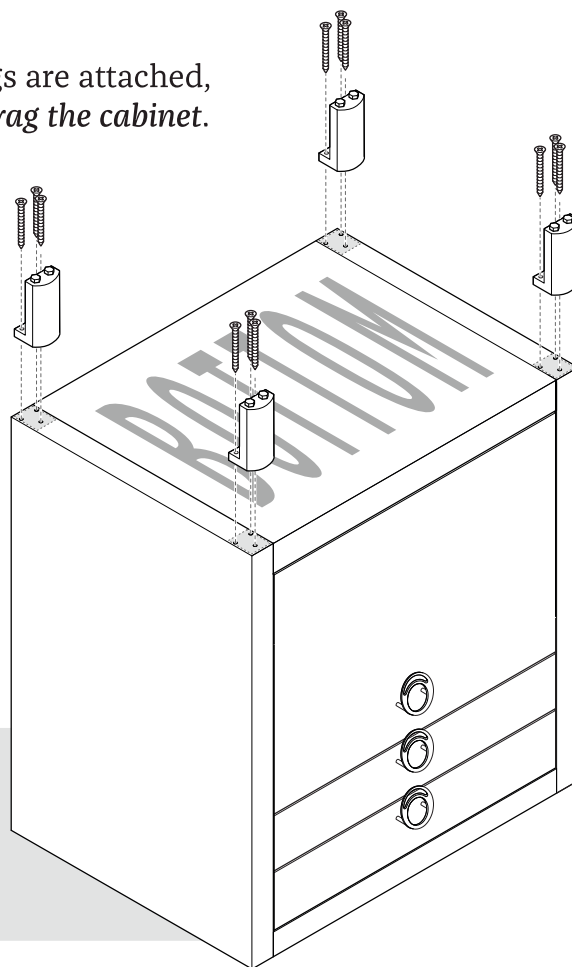


Note:
In case the holes are not marked, you can mark them using a sharp tool.

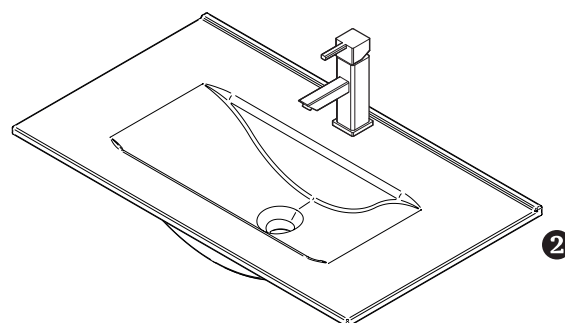
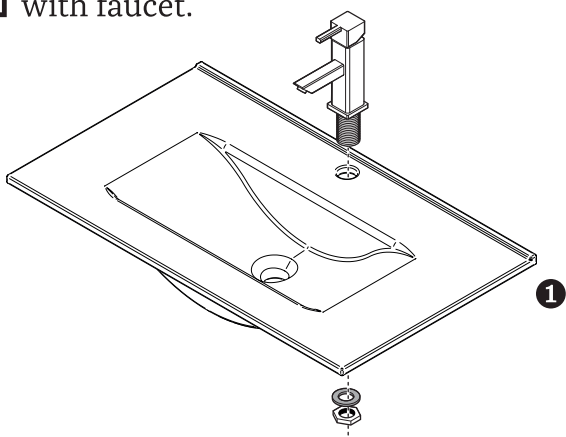
Note:
To avoid scratches place cabinet on a smooth soft surface.

2. Attach legs to the cabinet using screws.

Note:
Once legs are attached, do not drag the cabinet.



3. Attach the faucet to the sink and secure it with the rubber washer and the brass nut provided with faucet.



FPVN7836

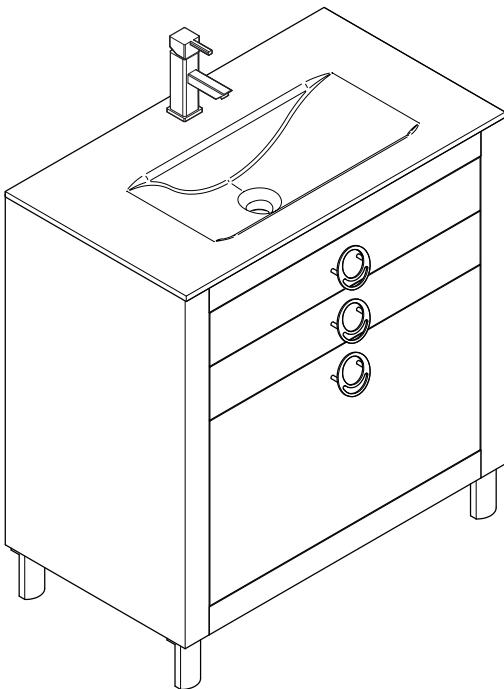
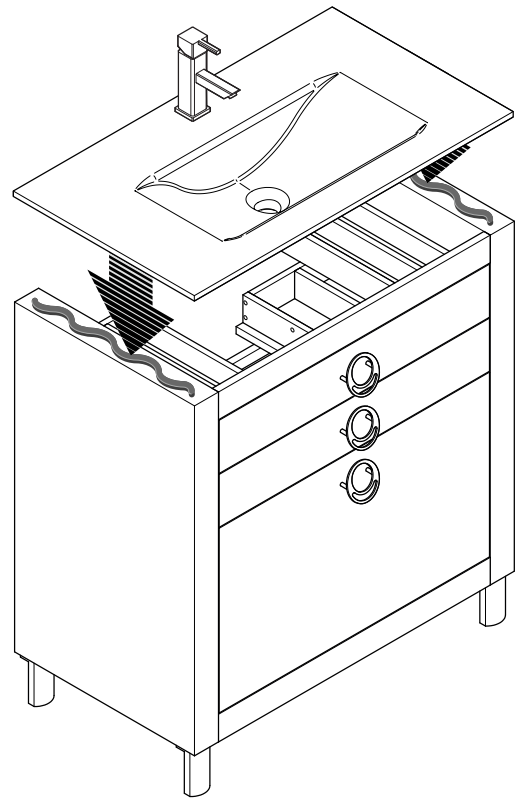
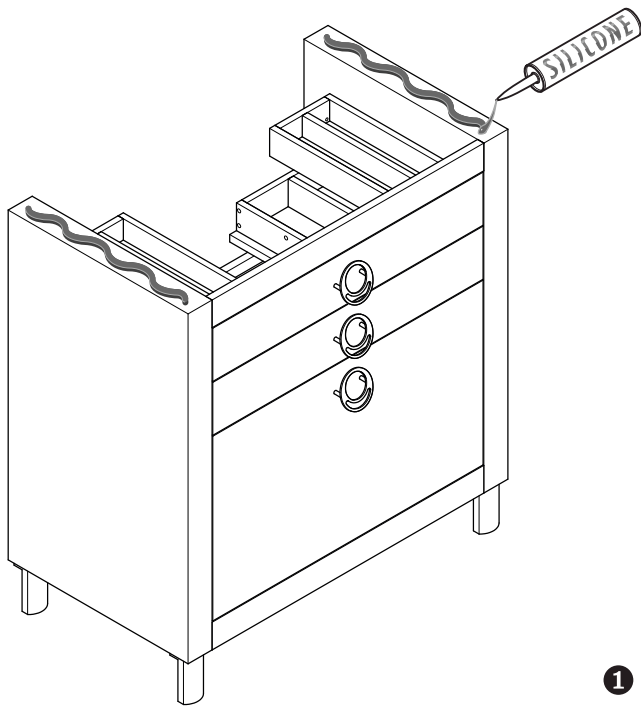
DUE

INSTALLATION GUIDE

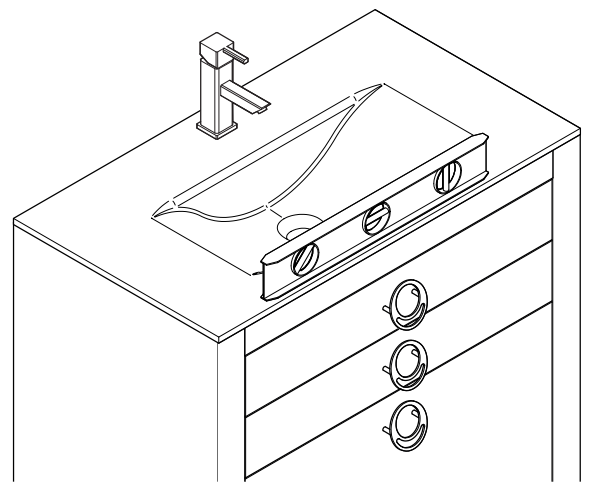
PAGE 2

INSTALLATION INSTRUCTIONS:

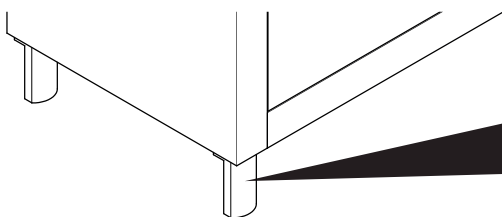
- 4.** Apply a bead of silicone on the top of the cabinet and place the sink on It.



- 5.** Place the cabinet on it's legs and place the level on the top to determine if leveled.



- 6.** If needed you can adjust the level of the cabinet by rotating bolts left or right on the bottom of the legs.



FPVN7836

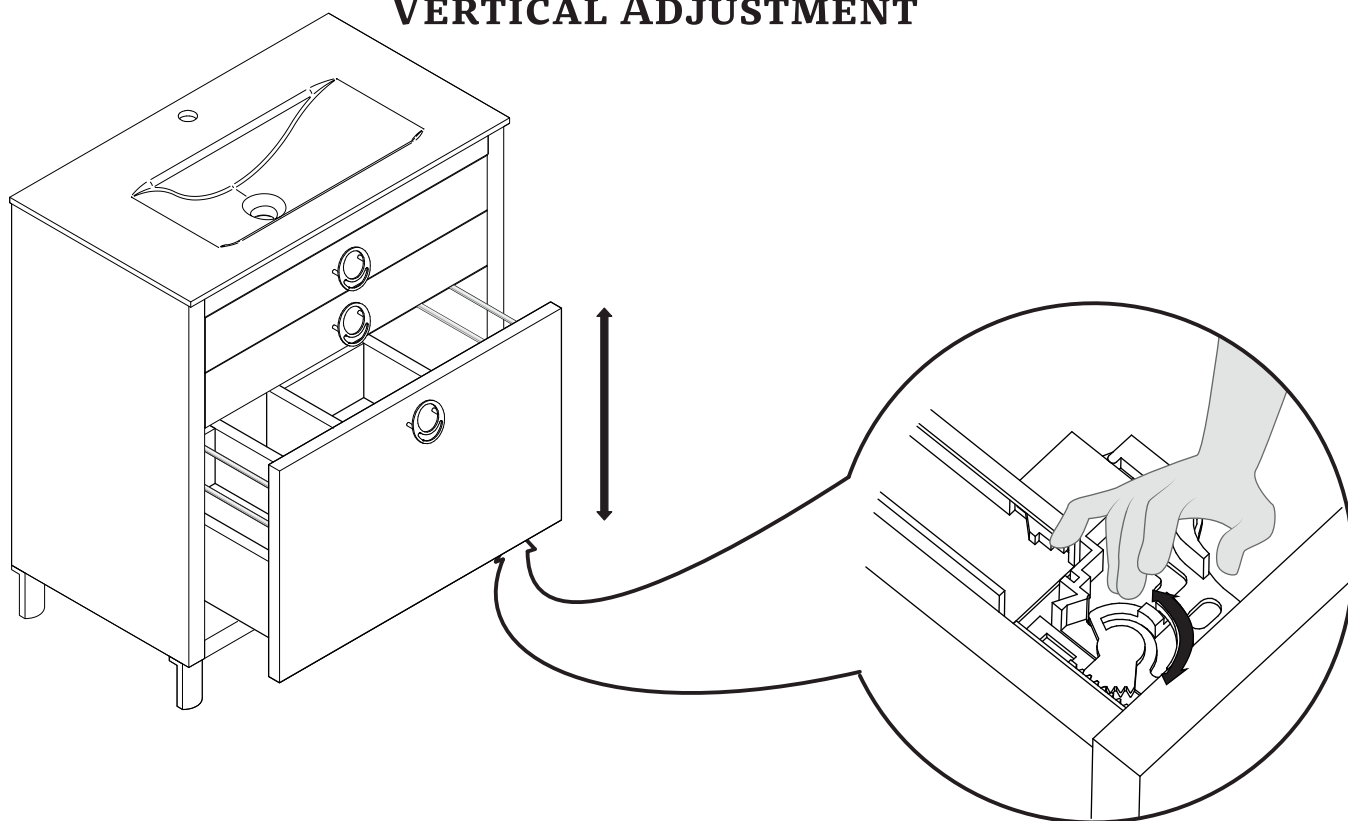
DUE

INSTALLATION GUIDE

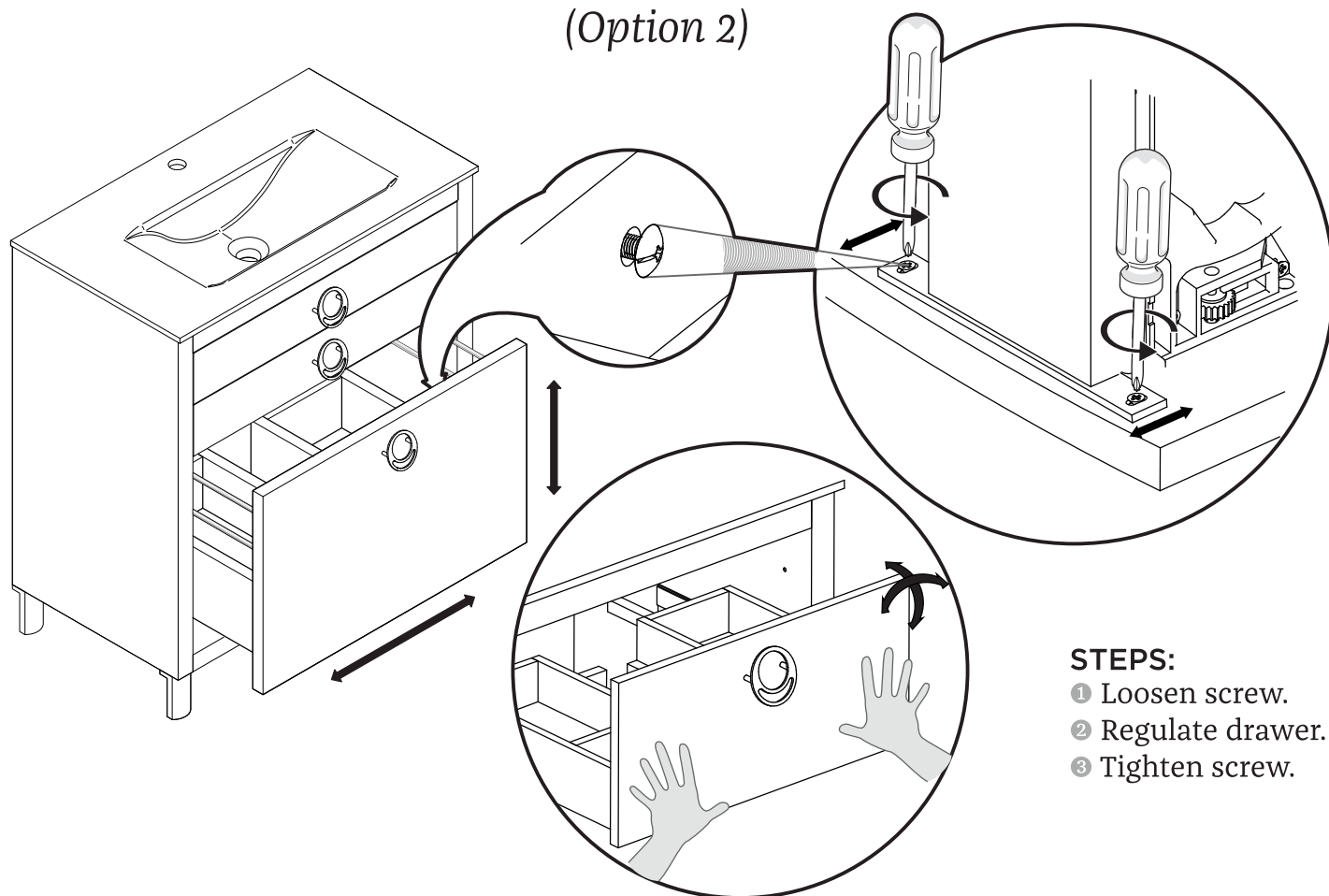
PAGE 3

FRONT DRAWER ADJUSTMENT:

VERTICAL ADJUSTMENT



VERTICAL & HORIZONTAL ADJUSTMENT (Option 2)



STEPS:

- ① Loosen screw.
- ② Regulate drawer.
- ③ Tighten screw.



FPVN7836

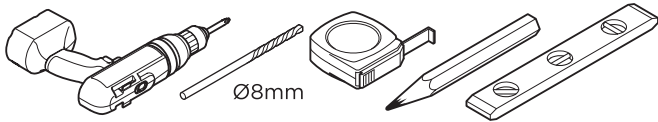
DUE

INSTALLATION GUIDE

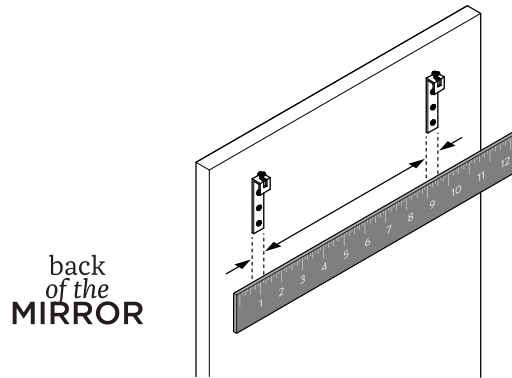
PAGE 4

MIRROR INSTALLATION INSTRUCTIONS:

TOOLS NEEDED FOR INSTALLATION

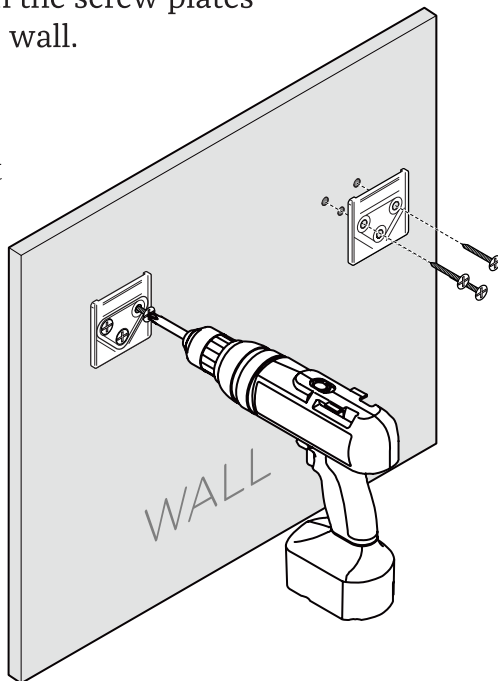


1. Measure distance between the brackets on the back of the mirror.

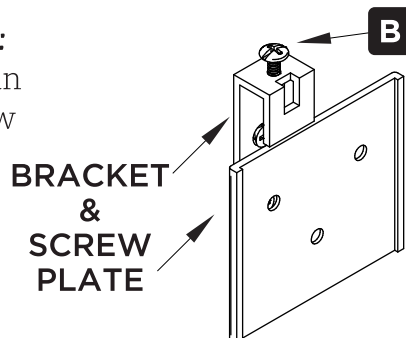


3. Attach the screw plates to the wall.

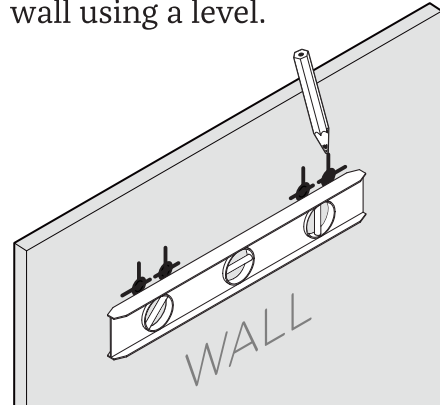
Note:
Use anchors if stud is not available.



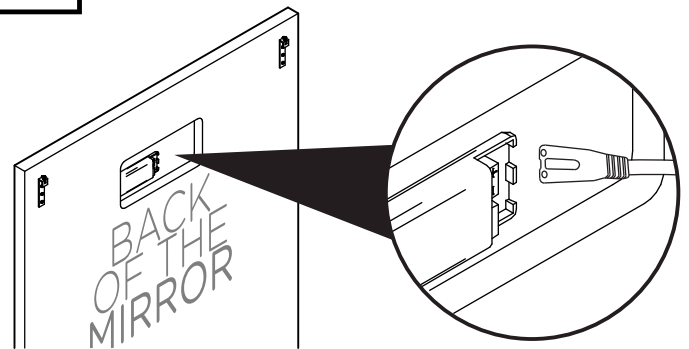
Note:
If the mirror is not leveled:
Fine-tune adjustments can be made by rotating screw (B) on bracket.



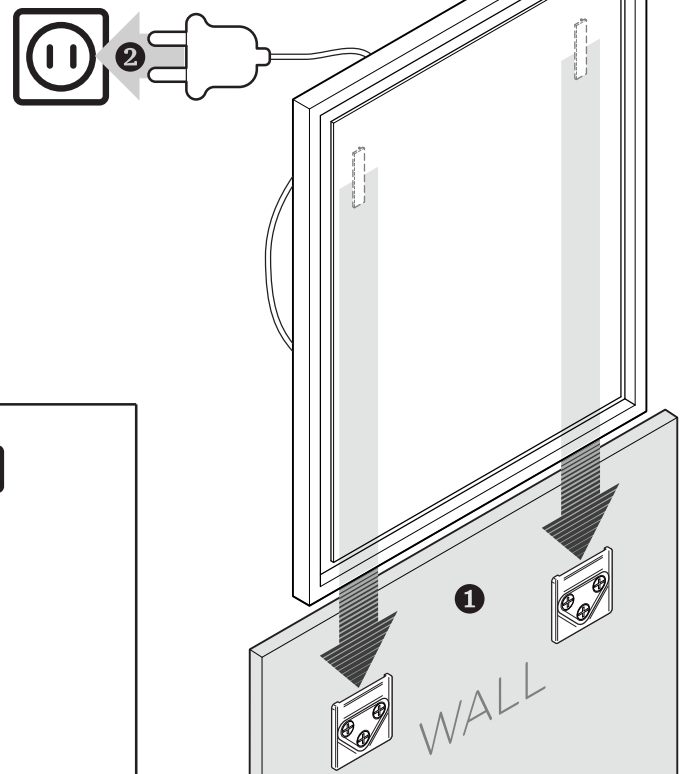
2. Mark a measured distance on the wall using a level.



4. Connect electrical wire to the transformer.



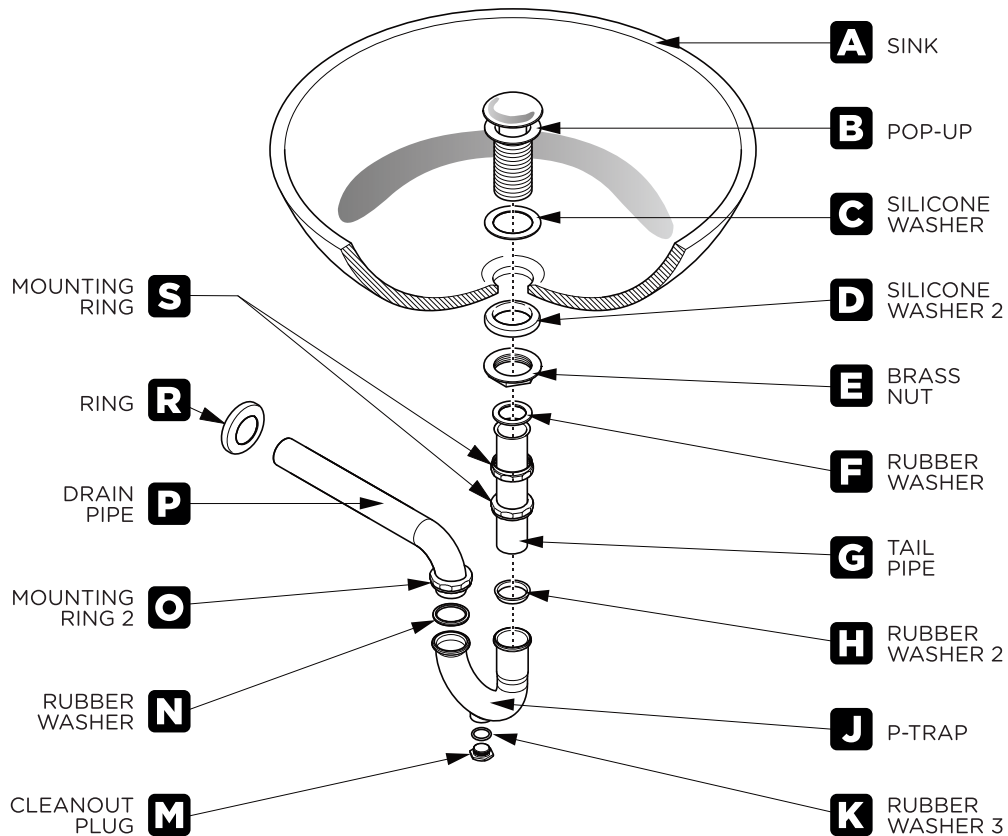
5. Slide mirror into place and connect power plug to outlet.



POP-UP & P-TRAP

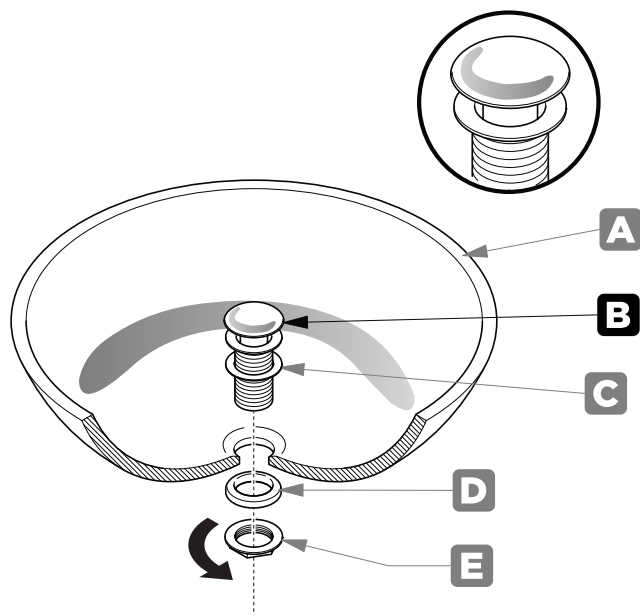
INSTALLATION INSTRUCTIONS:

Your item may appear slightly different from the illustration.



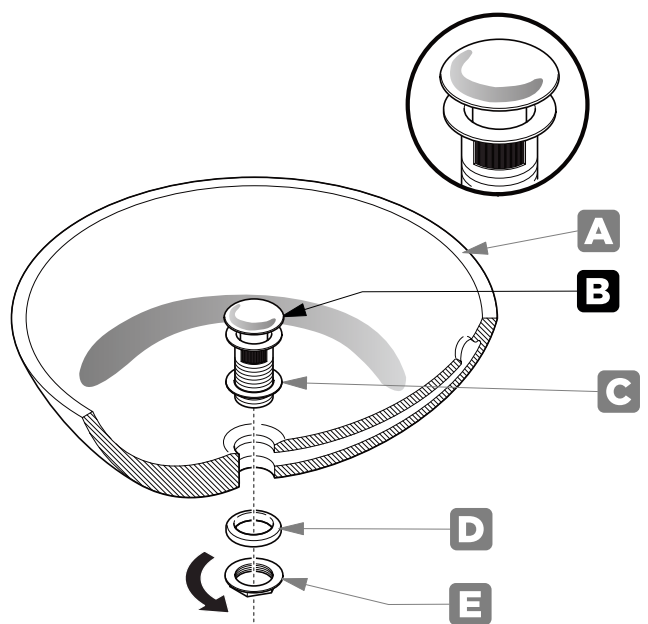
POP-UP INSTALLATION

**FOR SINKS
WITHOUT OVERFLOW**



OR

**FOR SINKS
WITH OVERFLOW**



FPVN7836

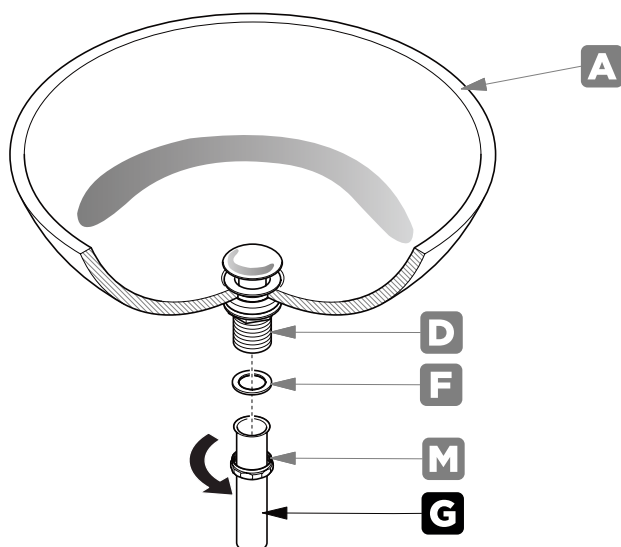
DUE

INSTALLATION GUIDE

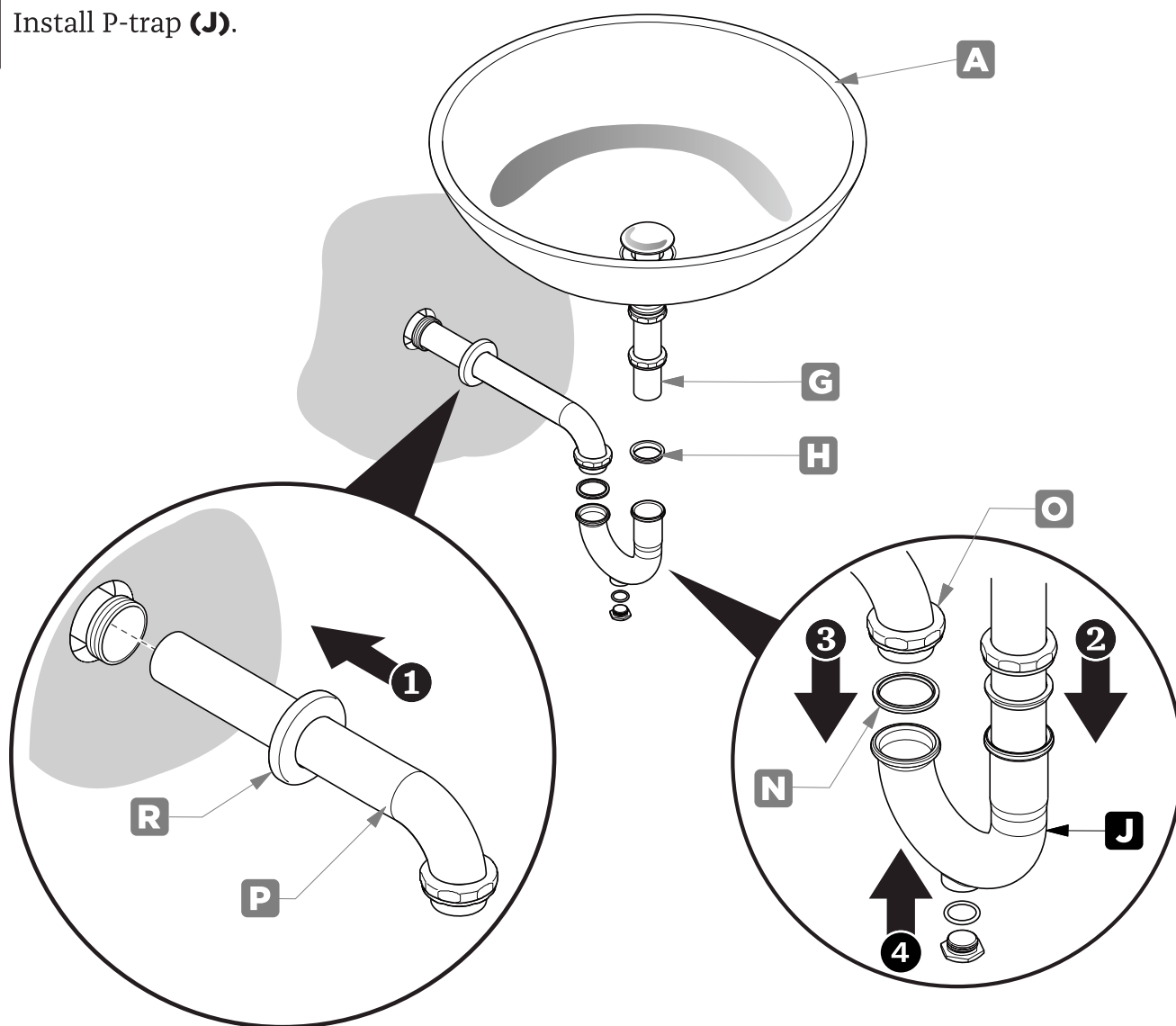
PAGE 6

P-TRAP INSTALLATION

1. Install tail pipe (G).



2. Install P-trap (J).



FPVN7836

DUE

INSTALLATION GUIDE

PAGE 7